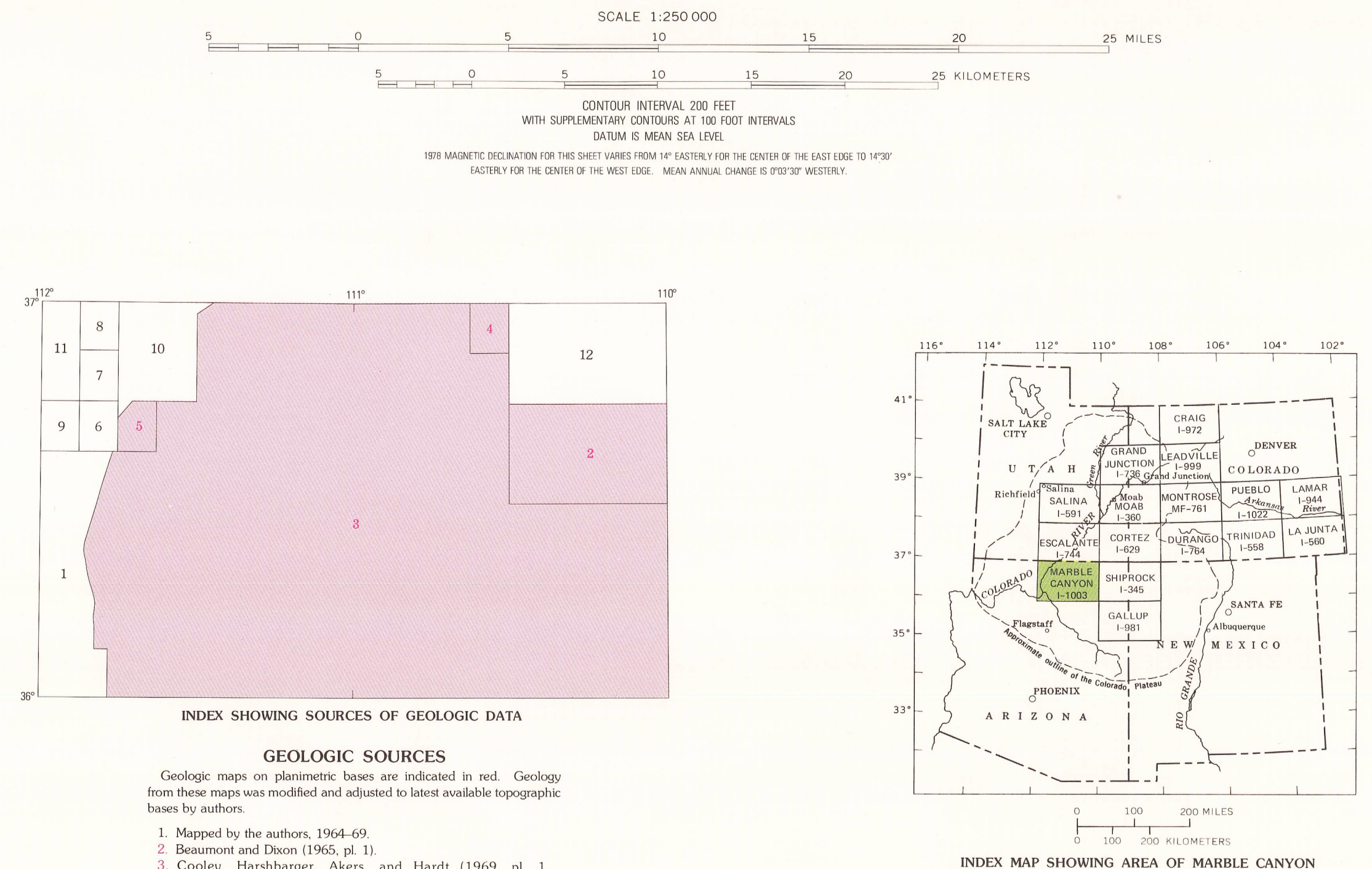
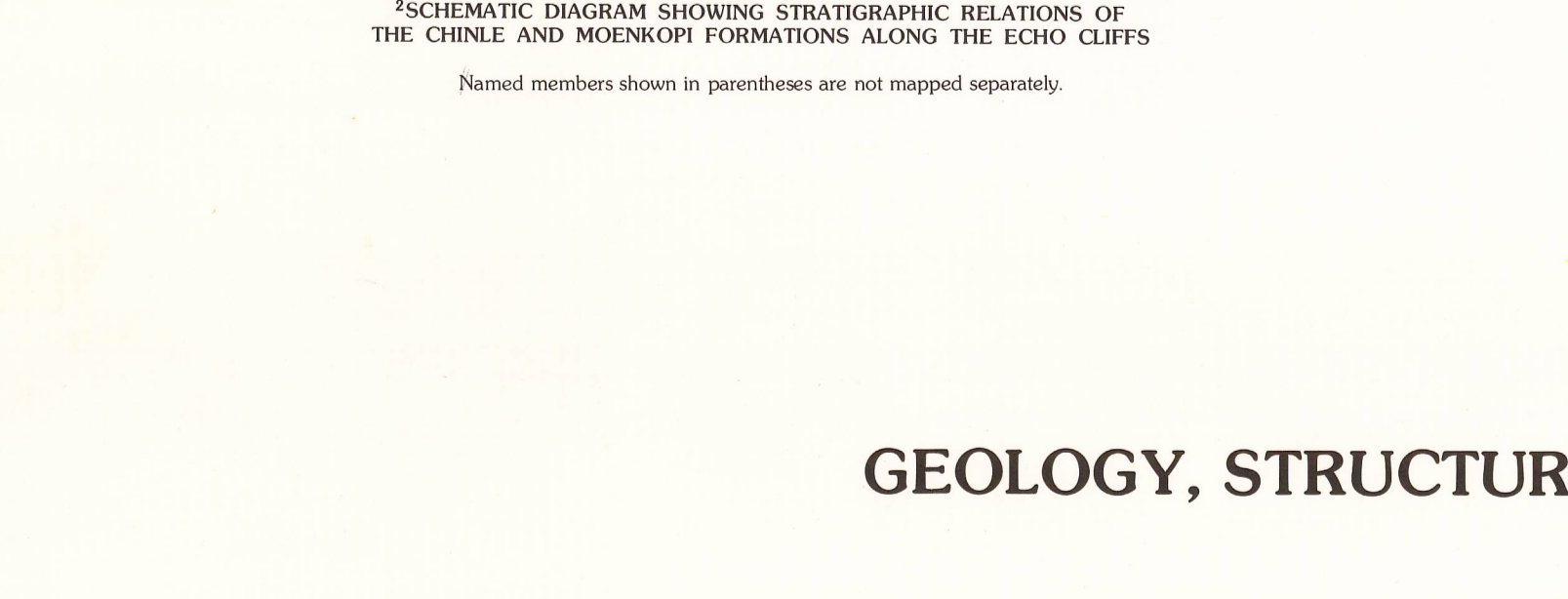
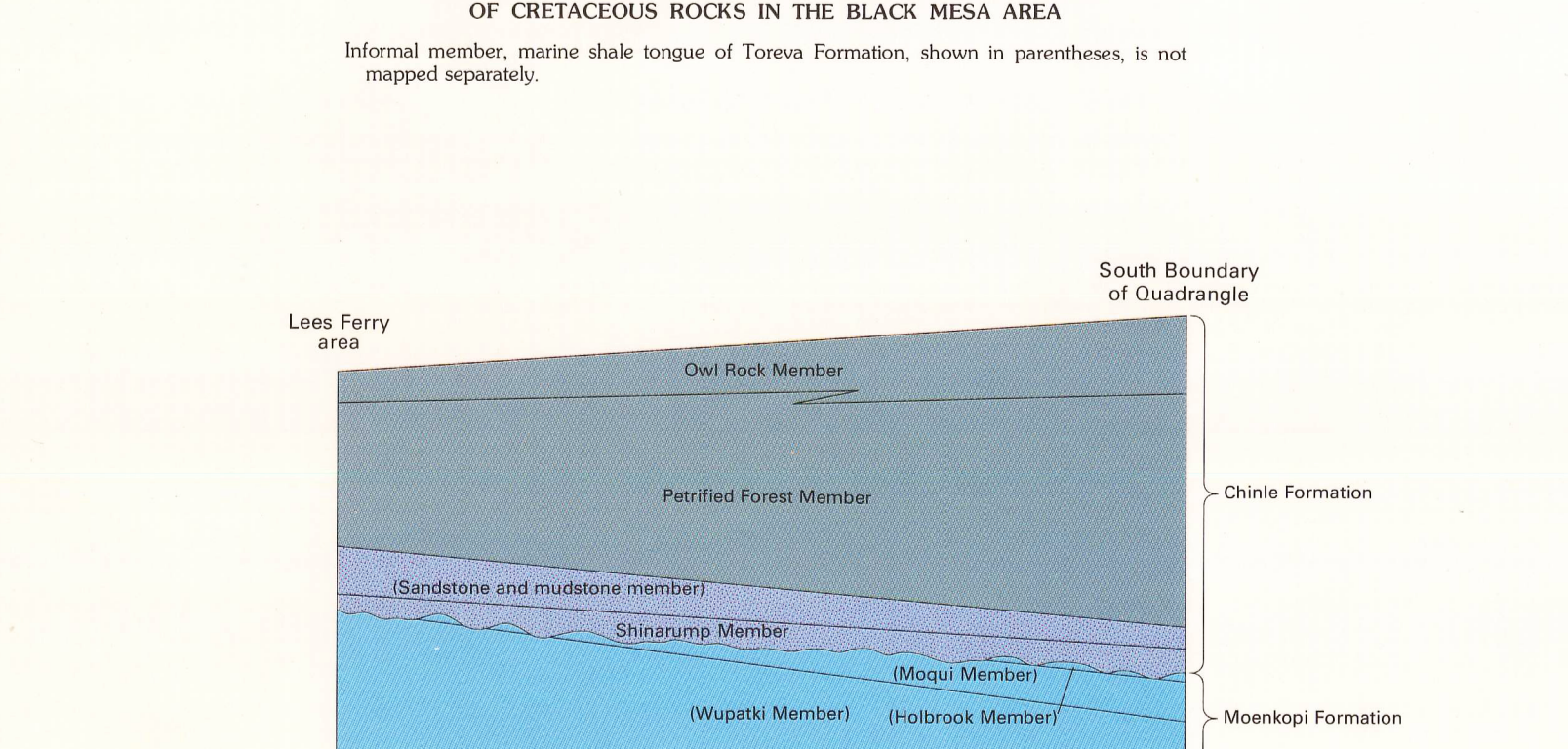
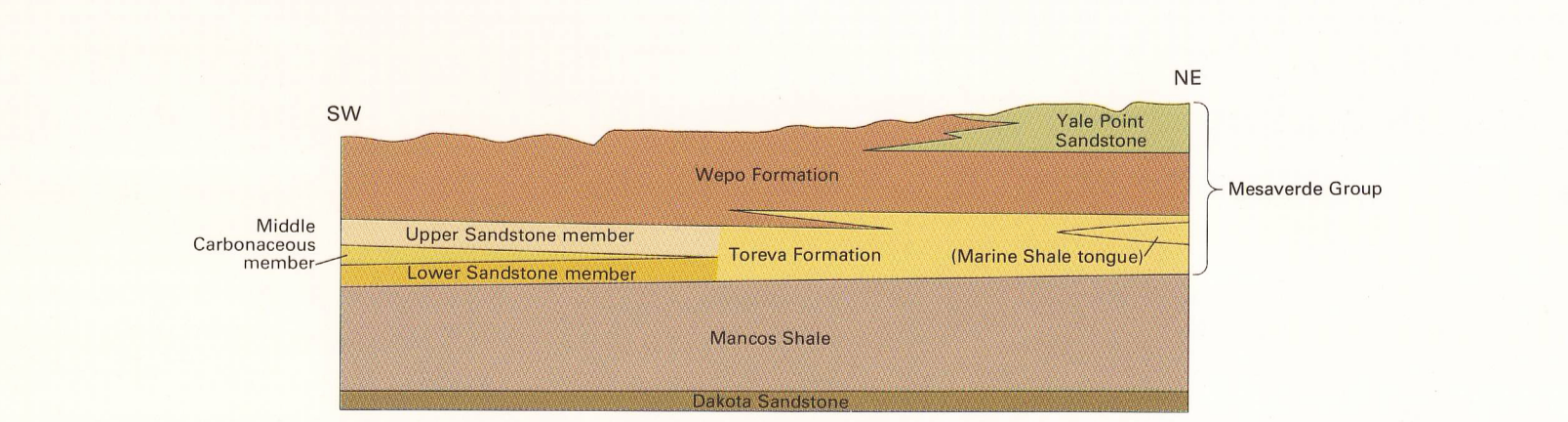
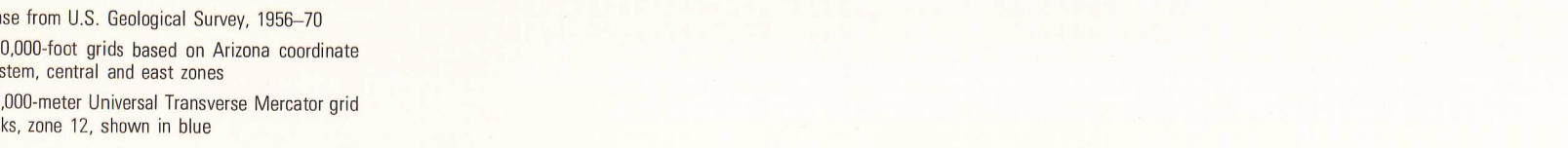


Table with columns for 'CORRELATION OF MAP UNITS' and 'QUATERNARY AND TERTIARY'. It lists various geological units with their corresponding map symbols and stratigraphic positions.

Table with columns for 'CORRELATION OF MAP UNITS' and 'CRETACEOUS', 'JURASSIC', 'TRASSIC?', and 'PERMIAN'. It lists various geological units with their corresponding map symbols and stratigraphic positions.

Table with columns for 'DESCRIPTION OF MAP UNITS' and 'ALLUVIAL AND EOLIAN DEPOSITS'. It provides detailed descriptions for various units, including alluvial fans, gravelly sandstone, and shale deposits.

Table with columns for 'DESCRIPTION OF MAP UNITS' and 'PERMIAN AND PENNSYLVANIAN', 'MISSISSIPPIAN, DEVONIAN, AND CAMBRIAN', and 'PRECAMBRIAN'. It provides detailed descriptions for various units, including Permian sandstone, Mississippian limestone, and Precambrian schist.



REFERENCES: A list of references cited in the report, including works by Armstrong, Baumgartner, Cooley, and others, providing geological data for the region.

