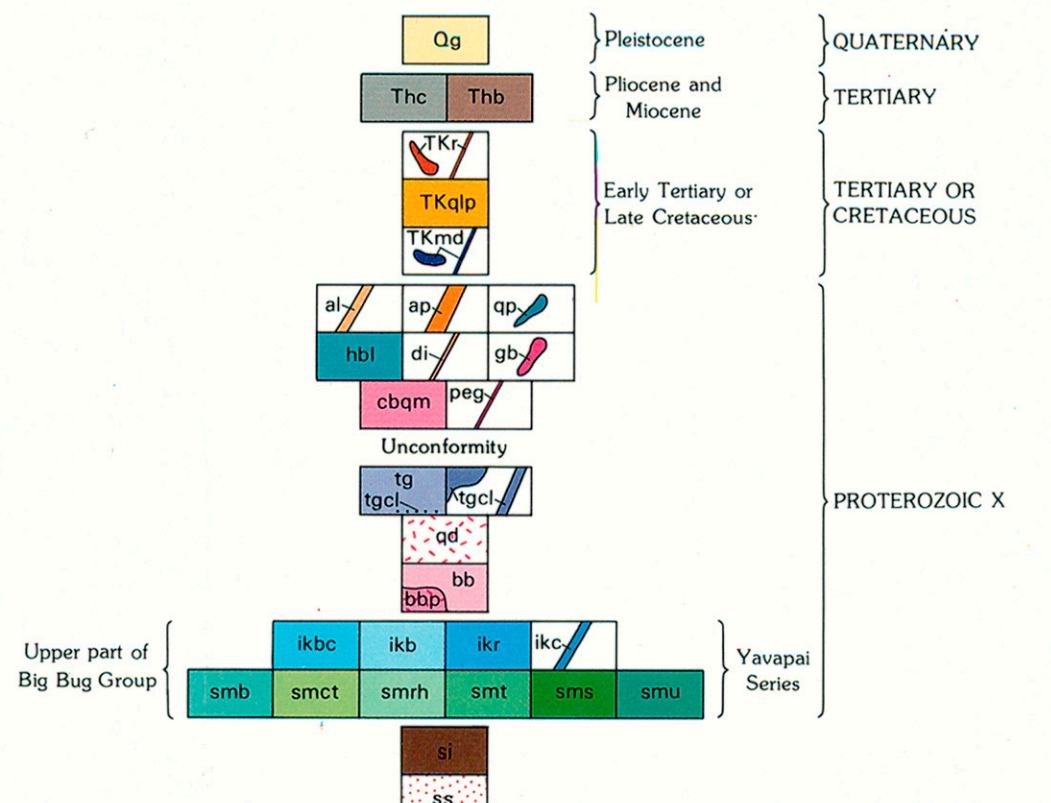


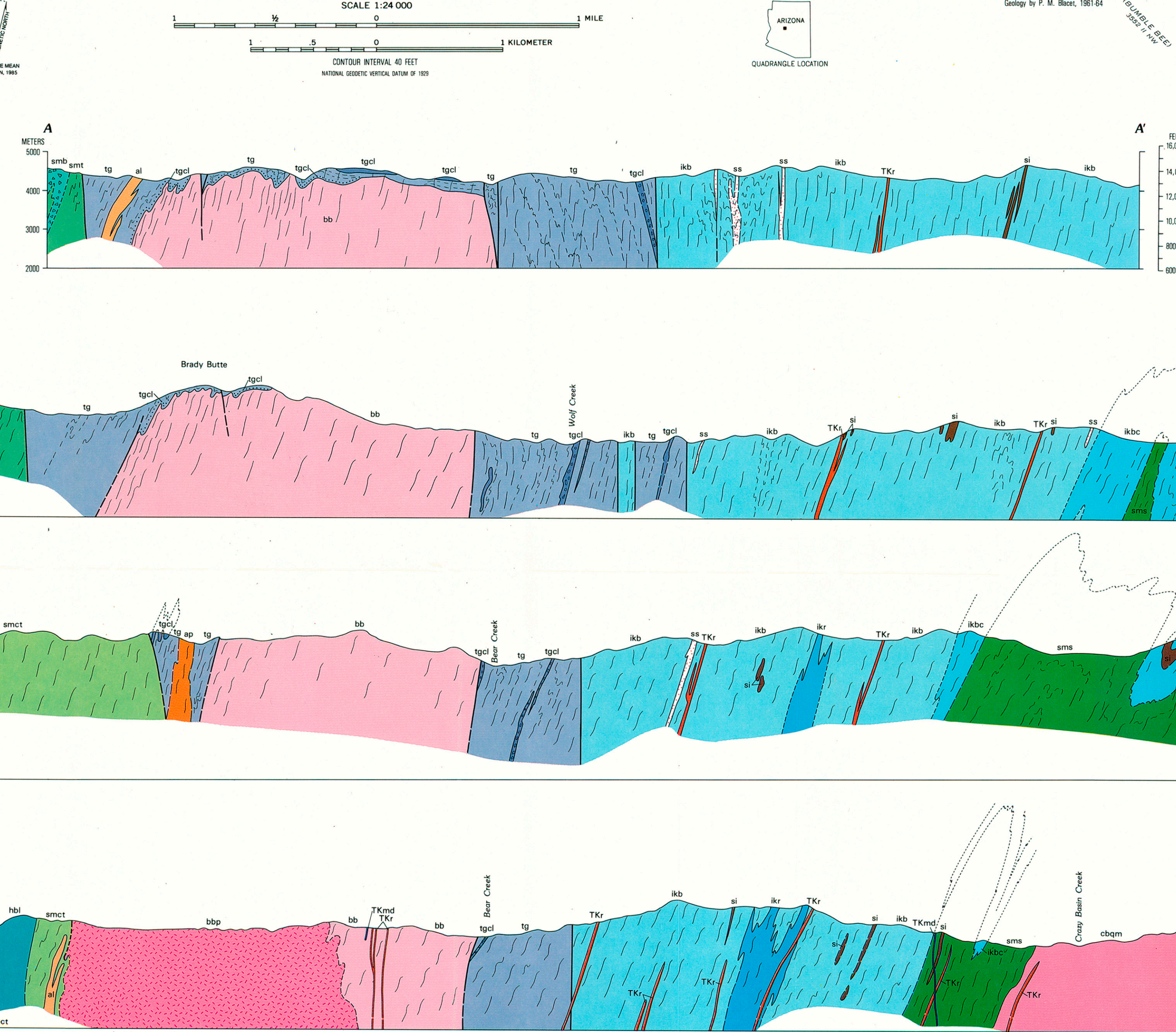
CORRELATION OF MAP UNITS



DESCRIPTION OF MAP UNITS

- Og REDDISH GRAVEL (Pleistocene)
- Thc HICKEY FORMATION (Pliocene and Miocene)
Conglomerate and sandstone
- Thb Basaltic flows
- TKr RHYOLITE PORPHYRY DIKES (early Tertiary or Late Cretaceous)
- TKgp QUARTZ LATTICE GABBRO (early Tertiary or Late Cretaceous)
- TKmd ALKALIC MAFIC AND LAMPORPHYRE DIKES (early Tertiary or Late Cretaceous)
- al SILICIC ROCKS (Proterozoic X)
Medium-grained alkalic
- ap Albite porphyry
- qp Fine-grained quartz porphyry
- ma MAFIC ROCKS (Proterozoic X)
Hornblende
- di Diorite
- gb Gabbro
- cbm CRAZY BASIN QUARTZ MONZONITE (Proterozoic X)
Coarse-grained facies
- peg Pegmatitic rocks
- TKg TEXAS GULCH FORMATION (Proterozoic X)
Alkalic sandstone, slate, phyllite, and tuffaceous sandstone; tgd (dots) indicates conglomerate at base
- tkg Pebble conglomerate and basal conglomerate (dotted pattern)
- qd QUARTZ DIORITE (Proterozoic X)
- bb BRADY BUTTE GRANODIORITE (Proterozoic X)
- bsp Porphyritic facies
- UPPER PART OF BIG BUTTE GROUP (Proterozoic X)—Consists of:
 - ikbc Volcanic breccia and conglomerate. Includes basaltic flows and mixed volcanic and nonvolcanic conglomerate
 - ikb Amygdaloidal and pillow basalt
 - ikr Rhyolite
 - ikc Ferruginous chert
- SPUD MOUNTAIN VOLCANICS
 - smc Andesitic breccia
 - smh Crystalline tuff
 - smh Rhyolitic rocks
 - smt Andesitic tuff and tuffaceous rocks
 - smv Sedimentary rocks
- Undifferentiated tuffaceous rocks and mafic flows
- QUARTZ LENSES, PODS, AND VEINS—Includes some recrystallized chert beds
- SILICIFIED AND SERICITIZED ROCKS

- CONTACT—Dashed where approximately located; short-dashed where inferred; dotted where concealed; queried where uncertain
- FAULT—Dashed where approximately located; short dashed where inferred; dotted where concealed. U, upthrown side; D, downthrown side
- OVERTURNED ANTICLINE—Showing direction of dip of limbs
- STRIKE AND DIP OF BEDS—Ball indicates top of bed
 - Inclined
 - Vertical
 - Overturned
- PILLOW STRUCTURES
 - Tops undetermined
 - Tops face semicircle
- STRIKE AND DIP OF FOLIATION
 - Inclined
 - Vertical
 - Warped
 - Chevron-type minor folds
- STRIKE AND DIP OF JOINTING
 - Inclined
 - Vertical
- QUARTZ VEIN—q, quartz
- BRECCIA OR PEBBLE DIKE
- BRECCIA ZONE OR PIPE
- BEARING AND PLUNGE OF LINEATION—May be combined with other symbols
 - Minor fold axis
 - Cleavage-bedding intersection
 - Elongate pebbles
 - Mineral streaking
 - Crenulated foliation (S₁-S₂ intersection)
 - Boudinage
 - Horizontal
 - Dip of fault, contact, or dike
 - SHAFT—Tick indicates an incline
 - ADIT
 - PROSPECT
 - TRENCH



GEOLOGIC MAP OF THE BRADY BUTTE AREA, YAVAPAI COUNTY, ARIZONA